

# 6X6 3-Stage Jet Pump



Safe Operating Procedures



**AXIS**  
RENTAL SOLUTIONS



- Suction Hose
- Fuel Tank
- Siphon Valve
- Control Panel
- Starting Lever
- Suction Fitting

**Jet Pump Major Components**

# Daily Maintenance Operations

- ▶ Visually inspect to ensure skid plugs are in place and the skid bolts are securely fastened, Check all fluid levels including fuel, oil and water/coolant. Inspect rain caps and ball valve assemblies to ensure they are functional.
- ▶ Inspect power take off (PTO) to ensure full engagement and full disengagement. Properly grease PTO daily.
- ▶ Inspect air bleed valves, packing glands and the pump housing (including all plugs) to ensure safe operation.
- ▶ Inspect air starter and fill oiler if necessary.
- ▶ Visually inspect emergency shutdown (ESD) for corrosion and operation.
- ▶ Inspect all hoses (suction discharge and jetting) and fittings for and corrosion or visual damages.



# Common Parts Data

## Detroit Diesel v871

- ▶ Oil Filter - Baldwin B95
- ▶ Primary Fuel Filter - Baldwin 5800 \*
- ▶ Secondary Fuel Filter - Baldwin 5810 \*
- ▶ Racor Fuel Filter - #2020 \*
- ▶ Air Filter - Duralite - Part# 546639
- ▶ Belts - Variable - Spares included \*

Every diesel engine operated piece of equipment delivered by Axis Rental Solutions will include all items noted with an asterisks. Should additional replacement parts be needed, please contact Axis Rental Solutions Technical Assistance.





# Pump Data



Siphon Valve  
PSI Gauge  
Discharge Valves

Peerless 3 Stage 6X6 (325 psi @ 1500 gpm)

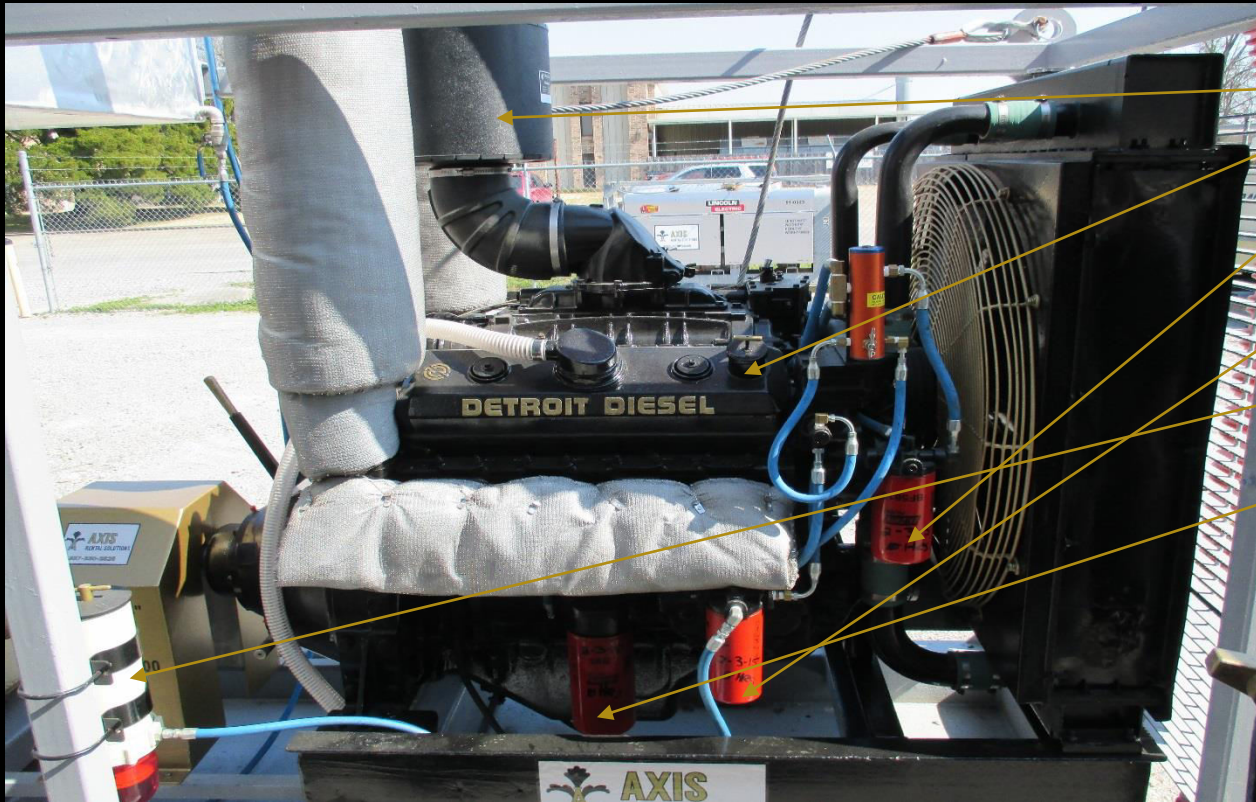
# Jet Pump (Suction Side)



- Air Filter
- ESD (Blower Shutdown)
- Engine Stop
- Throttle Control
- Engine Oil Dipstick
- Starter Oiler
- Engine Start Lever



# Jet Pump (Discharge Side)



Air Filter

Oil Fill

Primary Fuel Filter

Secondary Fuel Filter

Racor Fuel Filter

Oil Filter

# Priming Instructions

## Air Siphon Priming

Open the valve from siphon to the main pump. When water and air are flowing through, close both the air valve and the valve from the siphon to the pump and continue priming and then slowly open the discharge valve as described in the column to the right.

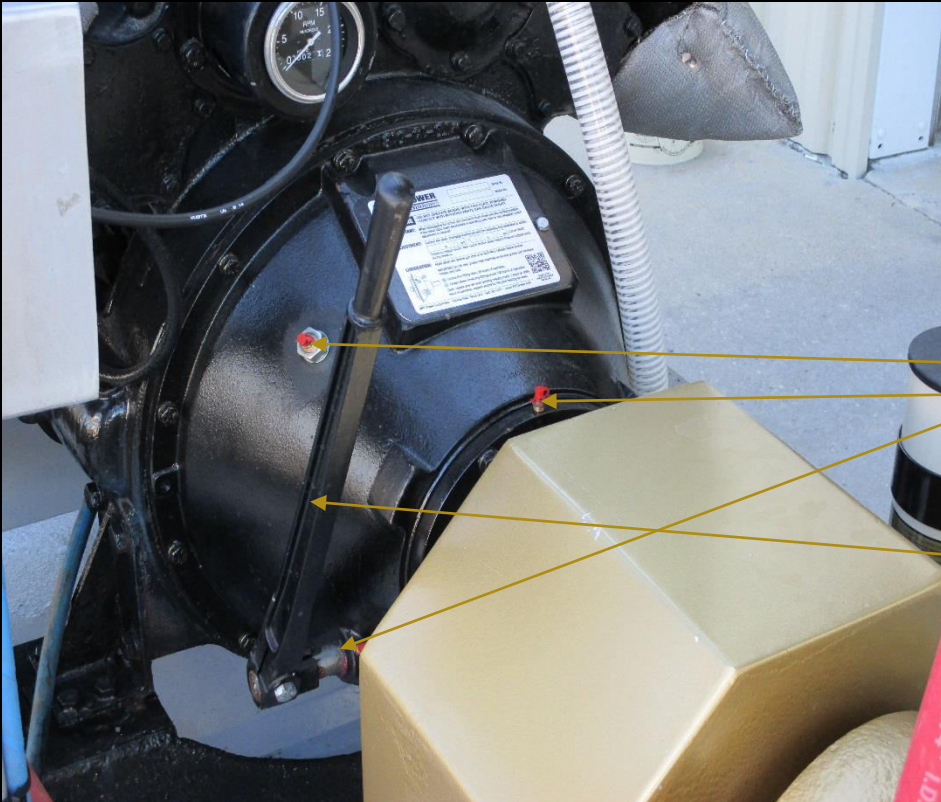
1. Submerge foot valve a minimum of three to four feet.
2. Ensure that suction hose is secure and free from leaks.
3. Make sure that power take off is disengaged.
4. Start engine as per operating procedures and let engine idle.
5. Ensure that all discharge valves are in the “closed” position.
6. Once pump is primed, engage the PTO and increase power to 750 RPM.
7. Open discharge valve slowly. The discharge hose should fill immediately upon opening the valve.
8. Once discharge hose fill is confirmed, increase engine to desired pump PSI.

## Note

If problems are encountered, contact Axis Rental Solutions for technical assistance.



# Power Take Off Information



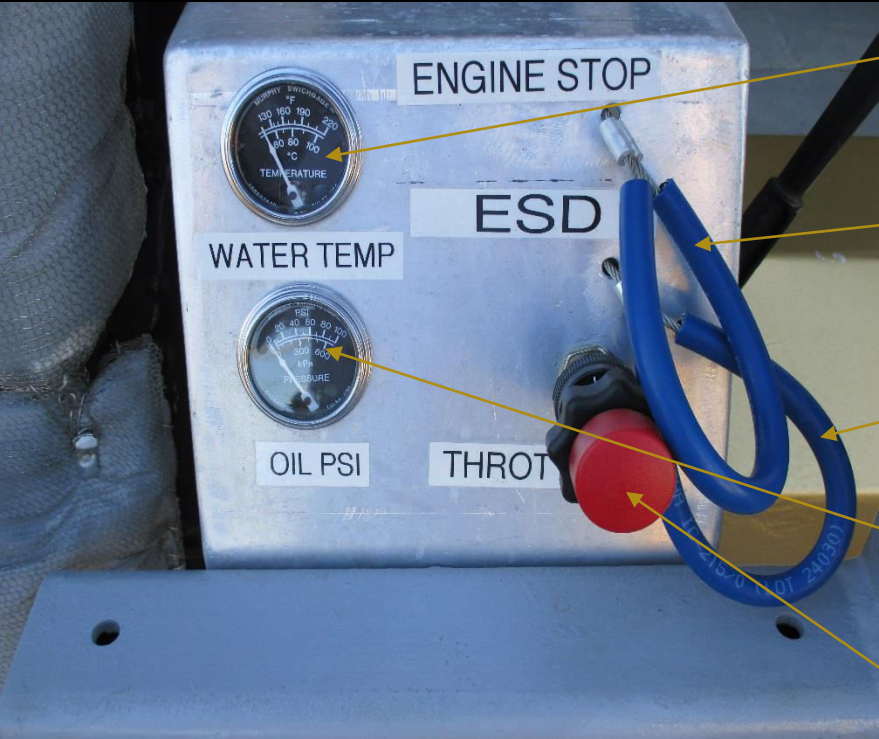
▶ Model Number - WTD-14-210

▶ Self Lubricating Bearings

▶ Grease Zerts

▶ PTO Handle

# Engine Control Panel Components



Water Temperature Gauge

Engine Stop

Emergency Shutdown

Oil PSI

Throttle

# Pump Packing Adjustments



## Note

All pumps are delivered with front and rear 5/8 graphite packing and has been previously adjusted.

▶ In order to prevent priming issue as well as to protect the integrity of the pump, water must be dripping from both the forward and rear packing glands.

▶ Adjustments - Make small adjustments as needed equally to both the forward and rear packing glands by using the hex headed nuts.

# Basic Pump Troubleshooting

## Pump Not Delivering Pressure

Air leaks on suction side of pump - Check and tighten packing as needed. Perform visual inspection of all fittings and suction hoses.

Foot Valve not large enough or damaged - Replace foot valve

Pump is vibrating - Check for foreign debris in pump housing. Worn bearings or pump not properly secured by bolts. Possible shaft or impeller malfunction (contact Axis Rental Solutions for technical assistance).

Pump is not priming - Attempt to prime pump again using enclosed priming instructions. Foot valve not adequately submerged or obstructed with foreign debris. Possible impeller malfunction.

Burning Smell - Power Take Off malfunction or packing is too tight.

Low PSI on Pump - Check the engine RPMs to ensure that engine is running at necessary power level.

## Notice

If problems are not resolved by performing the above mentioned troubleshooting, please contact Axis Rental Solutions Technical Assistance





# Axis Rental Solutions Technical Assistance

Greg Chasson



Location General Manager

Office -(337) 330-2828

Cell - (985) 518-1312

Paul Duval



Service Manager

Office - (337)330-2828

Cell - (337) 661-1648